



Flash
Surgical

GET THE BEST FOR YOUR MEDICAL FACILITY

Call Now



+91 9999246377

flash.surgical2022@gmail.
com

A collage of various surgical disposables including masks, gloves, gowns, and instruments. The items are arranged in a grid-like pattern against a white background. The items include: surgical masks (blue, white, yellow), gloves (blue, white, purple), gowns (blue, white), and various surgical instruments (scalpels, forceps, probes, etc.).

SURGICAL DISPOSABLES

IV CANNULA WITHOUT WINGS WITHOUT INJECTION PORT



Features

Needle: Siliconized, Ultra sharp, Stainless Steel, back-cut Japanese technology needle to perform easy and painless venipuncture.

Catheter: Available in FEP, PUR and PTFE material. Siliconised with proprietary technology ensuring smooth surface for minimal discomfort for both patients and clinicians.

Flashback Chamber : Flashback chamber allows quick visualisation for successful venipuncture.

Safety Cage : Ensuring healthcare worker safety with fail-proof needle locking mechanism, protecting healthcare workers from accidental, possibly fatal needle stick injuries.

IV CANNULA WINGS INJECTION PORT



Features

Needle : Siliconized ultra sharp, multi facet, stainless steel back cut, needle help clinician to perform easy and painless venipuncture.

Catheter : Available in FEP, PUR and PTFE material. Siliconised with proprietary technology ensuring smooth surface for minimal discomfort for both patient and clinician.

Flashback Chamber : Flashback chamber allows quick visualisation for successful venipuncture.

Flexible Wings : The flexible wings provides easy gripping and follows the contours of site allowing more secure fixation.

Needle Cover : Transparent needle cover to prevent accidental damage to needle and catheter.

SAFETY IV CANNULA SMALL WINGS WITHOUT INJECTION PORT

Features

Needle : Siliconized, Ultra sharp, Stainless Steel, back-cut japanese technology needle to perform easy and painless veni puncture.

Catheter : Available in FEP, PUR and PTFE material. Siliconised with proprietary technology ensuring smooth surface and minimal discomfort for both patients and clinicians.

Safety Cage : Ensuring healthcare worker safety with fail-proof needle locking mechanism, protecting healthcare worker from accidental possibility of fatal needle stick injury.

Flashback Chamber : Flashback chamber allows quick visualisaton for successful veni puncture.

Needle Cover : Transparent needle cover to prevent accidental damageto needle and catheter.



IV CANNULA SMALL WINGS WITHOUT INJECTION PORT

Features

Needle : Siliconized, Ultra sharp, Stainless Steel, back-cut japanese technology needle to perform easy and painless venipuncture.

Catheter : Available in FEP, PUR and PTFE material. Siliconised with proprietary technolog ensuring smooth surface and minimal discomfort for both patients and clinicians.

Flashback Chamber : Large FB chamber allows quick visualisaton for successful venipuncture.

Flexible Wings : The small wings provide effective grip and follow the site contours allowing secure fixation.

Needle Cover : Transparent needle cover to prevent accidental damage to needle and catheter.



IV CANNULA WITH INTEGRATED THREE WAY STOPCOCK



Features

Needle : Siliconized, Ultra sharp, multi facet, Stainless Steel, back-cut, needle help clinician to perform easy and painless veni puncture.

Catheter : Available in FEP, PUR and PTFE material. Siliconised with proprietary technology ensuring smooth surface and minimal discomfort for both patient and clinician.

Flashback Chamber : Flashback chamber allows quick visualisation for succesful veni puncture.

Three Way Body : The three way body provide flexibility to paramedic staff to administor multiple medicine at a time.

Needle Cover : Transparent needle cover to prevent accidental damage to needle and catheter.

IV CANNULA WITH WINGS WITH INJECTION PORT



Features

Ultra sharp silconised SS Needle : Siliconized, Ultra sharp, Stainless Steel, back-cut needle to perform easy and painless veni puncture.

Catheter :

Available in FEP, PUR and PTFE material. Siliconized with proprietary technology ensuring smooth surface and minimal discomfort for both patient and clinician.

Flashback Chamber :

Large FB chamber allows quick visualizaton for successful veni pucture.

Flexible Wings :

The flexible wings provides easy gripping and follows the contours of site allowing more secure fixation.

Needle Cover : Transparent needle cover to prevent accidental damage to needle and catheter.

IV CANNULA WINGS WITHOUT INJECTION PORT



Features

Needle : Siliconized, Ultra sharp, Stainless Steel, back-cut japanese technology needle to perform easy and painless venipuncture.

Catheter : Available in FEP, PUR and PTFE material. Siliconised with proprietary technology ensuring smooth surface and minimal discomfort for both patients and clinicians.

Flashback Chamber : Flashback chamber allows quick visualisation for successful veni puncture.

Flexible Wings : The flexible wings provide effective grip and follow the site contours allowing secure fixation.

IV CANNULA SMALL WINGS WITHOUT INJECTION PORT



Features

Needle : Siliconized, Ultra sharp, Stainless Steel, back-cut japanese technology needle to perform easy and painless venipuncture.

Catheter : Available in FEP, PUR and PTFE material. Siliconised with proprietary technology ensuring smooth surface and minimal discomfort for both patients and clinicians.

Flashback Chamber : Flashback chamber allows quick visualisation for successful veni puncture.

Flexible Wings : The flexible wings provide effective grip and follow the site contours allowing secure fixation.

IV CANNULA WITHOUT WINGS AND INJECTION PORT



Features

Needle : Siliconized, Ultra sharp, multi facet, Stainless Steel, back-cut, needle help clinician to perform easy and painless veni puncture.

Catheter : Available in FEP, PUR and PTFE material. Siliconised with proprietary technology ensuring smooth surface and minimal discomfort for both patient and clinician.

Flashback Chamber : Flashback chamber allows quick visualisaton for succesful veni puncture.

Three Way Body : The three way body provide flexibility to paramedic staff to administor multiple medicine at a time.

Needle Cover : Transparent needle cover to prevent accidental damage to needle and catheter.

IV CANNULA WITHOUT WINGS WITHOUT INJECTION PORT



Features

Needle : Siliconized, Ultra sharp, Stainless Steel, back-cut japanese technology needle to perform easy and painless venipuncture.

Catheter : Available in FEP, PUR and PTFE material. Siliconised with proprietary technology ensuring smooth surface and minimal discomfort for both patients and clinicians.

Flashback Chamber : Flashback chamber allows quick visualisaton for successful veni puncture.

Flexible Wings : The flexible wings provide effective grip and follow the site contours allowing secure fixation.

IV CANNULA WITHOUT WINGS AND INJECTION PORT



Features

Needle : Siliconized, Ultra sharp, multi facet, Stainless Steel, back-cut, needle help clinician to perform easy and painless veni puncture.

Catheter : Available in FEP, PUR and PTFE material. Siliconised with proprietary technology ensuring smooth surface and minimal discomfort for both patient and clinician.

Flashback Chamber : Flashback chamber allows quick visualisation for succesful veni puncture.

Three Way Body : The three way body provide flexibility to paramedic staff to administor multiple medicine at a time.

Needle Cover : Transparent needle cover to prevent accidental damage to needle and catheter.

IV CANNULA WITHOUT WINGS WITHOUT INJECTION PORT



Features

Needle : Siliconized ultra sharp, multi facet, stainless steel back cut, needle help clinician to perform easy and painless vein puncture.

Catheter : Available in FEP, PUR and PTFE material. Siliconised with proprietary technology ensuringsmooth surface and minimal discomfort for both patient and clinician.

Flashback Chamber : Large FB chamber allows quick visualisation for succesful venipuncture.

Needle Cover : Transparent needle cover to prevent accidental damage to needle and catheter.

Cap : Colour coded cap for guage identification.



Features Benefits

Needle :

Siliconized, ultra sharp, multi facet, stainless steel, back cut, needle help clinician to perform easy and painless veni puncture.

Catheter :

Siliconized with an exclusive process and made of FEP/PTFE/PUR material has smooth outer surface and tapered tip for extra smooth and painless veni puncture with minimum pain.

Flashback Chamber :

It allows quick visualizations of flash back of blood and confirmation of successful veni puncture.

Needle Cover :

Transparent needle cover to prevent accidental damage to needle and catheter.

Option Available :

FEP/PTFE/PUR Catheter | Medical paper/Tyvek | Hydrophobic filter | Sterile/Non-Pyrogenic/
Single use

Certifications : • CE • ISO 13485:2016

THREE WAY STOPCOCK WITH AND WITHOUT EXTENSION TUBE



Features

- Three way stopcock is suitable for use during presser infusion and invasive blood pressure monitoring.
- Smooth 360° rotation or Dispaclick 45° Steps.
- Clear body for easy visual of fluid flow.
- Arrow mark on tap for indicating flow direction.
- Prevents vortex and reduces thrombus formation.
- Excellent pressure resistance upto 300kPa (45psi).
- Two(2) female luer, one(1) male luer for secure connection with accessories, as per ISO-80369-7.

Options

- Red and blue pegs for arterial and venous line identification.



Features

- Needle is fixed into wings on an automatic assembly machine.
- Soft flexible wings for easy gripping and secure positioning on the skin for cannulation
- Made of DEHP free PVC.
- Stainless steel needle sharp tip lancet cut needle with high lumen flow.
- Every Needle tip is inspected by a high definition Electronic Vision Camera for its angle/burrs and tip blunt.
- Needle coated with specially formulated silicon solution for smooth in insertion.
- PVC tube is soft, flexible & kink resistance.
- Color coded wings for easy identification of gauge.
- Sterile/Non-Pyrogenic/Single use.

Technical Specification

Size	Needle Length (mm)	Needle Diameter (mm)	Packing Inner/Outer Unit
18G	19	1.20	100/1000
19G	19	1.10	
20G	19	0.90	
21G	19	0.80	
22G	19	0.70	
23G	19	0.60	



Features

- Soft Flexible DEHP Free tube with 15 cm length tube & pinch clamp is replace the use of stop cock.
- Luer Locks as per ISO-80369-7 for all Disposables.
- Kink-resistant quality tube.

Option available :

- Needle less Injection site. - Microbore tube (1.1x2.1mm) - Two & Three

Connecting Extension lines, Quad, Penta.

Technical Specification

Size	Capacity	Packing Inner/Outer Unit
5m-100cm	2.8x3.8mm	100/1000



Features

- Used to extend the IV fluid pathway and for blood/blood derivatives/nutritive or medicinal fluids transfusion and or infusion.
- Flow Rate of low pressure extension line is 200ml/min.

Male Luer Lock and Female Luer Lock connector at ends to make connection with other equipment or devices all in compliance with ISO-80369-7(6% luer taper).

Option Available :

DEHP Free PVC tube | Lipid resistant | Tube length 10cm to 250cm | Minimum priming volume | Sterile/Non-Pyrogenic/Single use

Technical Specification

Size (cm)	Ext.-Int. Dia (mm)	Length (cm)	Packing Inner/Outer Unit
10	3.8	10	50/500
25	3.8	25	
50	3.8	50	
75	3.8	75	30/300
100	3.8	100	
150	3.8	150	
200	3.8	200	
250	3.8	250	



Features

PE Extension Line (Straight) It is suitable for Pressure Monitoring and for connection between syringe infusion pump to Patient:-

- It has small bore for High Pressure. (upto 580psi)
- Made of Polyethylene.
- It is made of inert material so all types of commonly used infusion fluids can be used through this tube.
- Leak proof Male Luer Lock and Female Luer Lock made according ISO-80369-7 are provided at ends ensure, fitment to all standard Medical Equipment and Devices.

Available in following configuration :

- Length : 100, 150, 200cm
- Capacity 1.0ml per 100cm
- Tube Diameter: Internal 1.0mm & external 2.0mm.
- Male Luer at one end and Female Luer at other end.
- Male Luer & Female Luer complies ISO-8369-7.
- Packed in peel open pouch or soft blister pack.
- Sterile/Non-Pyrogenic/Single use



Features

Small bore high pressure Extension Line It is suitable for Pressure Monitoring

- It has small bore for High Pressure. (upto 140psi)
- Made of P.V.C.
- Leak proof Male Luer Lock and Female Luer Lock made according ISO-80369-7 are provided at ends ensure, fitment to all standard Medical Equipment and Devices.

Option Available :

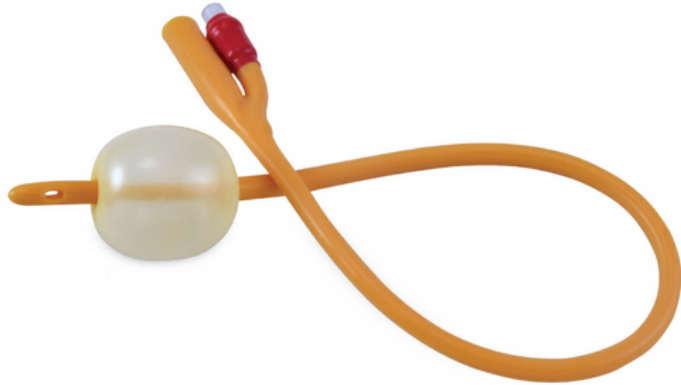
DEHP Free PVC tube | Lipid resistant | Tube length 10cm to 250cm |

Minimum priming volume Sterile/Non-Pyrogenic/Single use

Available in following configurations :

- Length: 50, 100, 150, 200cm.
- Capacity 1.0ml per 100cm.
- Tube Diameter: Internal 1.0mm & external 2.0mm.
- Male Luer at one end and Female Luer at other end
- Colour coded sticker provided for identification of connection..
- Male Luer & Female Luer complies ISO-8369-7.
- Packed in peel open pouch or soft blister pack.
- Sterile/Non-Pyrogenic/Single use

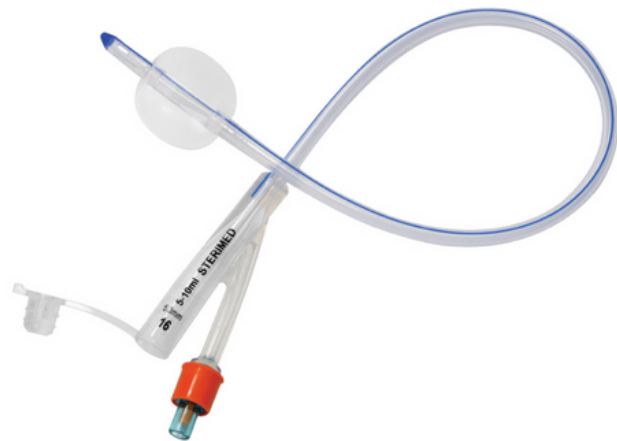
Foley Balloon Catheter



Features

- Used for short term urine drainage
- Made from natural latex rubber
- Silicon elastomer coated smooth surface for atraumatic catheterization
- High strength polymer layer in the middle of the catheter ensures wider inner diameter and hence high flow rate
- Minimises encrustation and subsequent catheter blockage and failure
- Smooth eye, ultra thin highly elastic balloon and hard non-return valve for trouble free inflation and deflation

Silicon Foley Balloon Catheter (BH)



Features

- Provided with flow control clamp to ensure proper use of bladder muscles .
- Self lubricated silicon shaft provides low friction surface to allow trauma free removal.
- Balloon made from low durometer, highly elastic silicon which provides very good tear strength.

Urethral Catheter



Features

- Used for short term bladder catheterization
- Made from non-toxic, non-irritant, medical grade PVC
- Radio opaque line provided through out the catheter for X-ray visualization
- Distal end with lateral eyes and proximal end funnel connector, for maximum drainage and easy connection to the urine bag

Male External Catheter Penile Sheath



Features

- Used for urine drainage in incontinent male patients
- Made from natural latex rubber
- Provided with adhesive strip for proper fixing of the catheter

Manual Vacuum Aspiration (MVA Kit) Double Valve



Features

- Used for Manual Aspiration procedure (Medical termination of pregnancy)
- Made from medical grade polypropylene
- Kit consists of MTP Syringe, Karman Cannula, lubricating oil
- The MTP Syringe provides high vacuum suction during abortion procedure
- Smooth cannula with rounded tip and smooth eyes for atraumatic cannulation
- Available in single valve and double valve syringe
- Karman Cannula SMD 800 available separately as well in size 4mm - 12mm

Infant Mucus Extractor



Features

- Used for aspiration of secretion from oropharynx in newly born babies
- Made from non-toxic, medical grade PVC
- Transparent chamber for visual examination of the content
- Round open tip for atraumatic intubation, and proximal end with funnel connector for easy connection to the suction equipment
- Optional: available with filter and without filter models

Umbilical Cord Clamp



Features

- Used for clamping the umbilical cord of newly born babies
- Made from non-toxic, medical grade PVC
- Permanent locking system to prevent clamp reopening
- Finger grip to facilitate easy holding and locking of the clamp

Umbilical Catheter



Features

- Used to access the umbilical vessels of pre-mature or newly - born babies
- Made from non-toxic, medical grade PVC
- Smooth round tip for atraumatic insertion and well-finished surface facilitate smooth passage in the vein
- Markings at every cm to ascertain depth of insertion, radio opaque line ascertain position during scans
- Proximal end provided with Luer female connector for easy connection to the I.V. therapy equipment

Delivery Kits - All About Safe Child Birth Normal and Caesarian



Content options for customizable kits:

- Gauze Swab
- Abdominal Sponge (X-Ray op.)
- Umbilical Cord Clamp
- Umbilical Cord Ties
- Umbilical Tabular band (Elastic)
- Umbilical Scissor
- Sutures
- Forceps
- Needle Holder
- Mucus Extractor with Adopter
- Syringe (20 ml)
- Baby Wipe (60x60)
- Baby Diaper
- Baby Blanket
- Baby Garment
- Feeding Bottle
- Maternity Gown
- Maternity Pads
- Maternity Mesh Panty
- Surgeon Caps
- Surgeon Gown
- Surgeon Gloves
- Lignocaine Gel
- Povidone Iodine Solutions
- Plastic Tray
- Applicator Stick
- Perineal Sheet with Legging
- Maternity Drape Sheet
- Under Pad with Collecting Bag
- Instruction Sheet
- Measuring Tape
- Dimension Detail Sheet
- Pen
- ID Band (Pediatric)
- ID Band Adult
- Waste Bag



FACE SHIELD

300 Micron
Covers full face
Elastic band for snug fit

FACE MASK (3 PLY)

20 GSM Fabric
Splash resistance
3 Layers for protection

GLOVES

Nitrile gloves
One pair in each kit

FULL PROTECTION SUIT

Breathable material
95 GSM laminated fabric
Tape sealed on stitch lines
Elastic closure on hands and face
Double protection flap on zipper

SHOE PROTECTOR

Free size and adjustable
One pair each kit

COTTON CREPE BANDAGE

- Medium and heavyweight compression
- Reduces swelling
- Secures wound dressing
- Supports strains and sprains

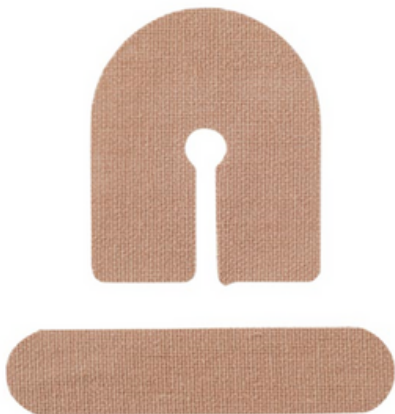


ELASTIC ADHESIVE BANDAGE

- Flesh coloured with fast edges
- Porous adhesive used for air circulation
- Made up of 100% cotton threads
- 7 x 4 x 3 cm; 190 Grams

COMBINE DRESSING

- Highly absorbent cotton
- Throughout the combined pad
- Hydrophobic backing
- Cotton filler having Ryan fibres allows liquid to diffuse



CANNULA FIXATOR

- Hypo-allergic can be used on patients with fragile skin also
- Stretches with body movements
- Saves nursing time
- Fast and efficient with fixator
- Covers and protect catheter site
- Secure devices to the skin

ABSORBENT COTTON WOOL

- Fabricated using 100 % cotton
- Convenient for cleaning and swabbing
- Absolutely free from naps and seeds



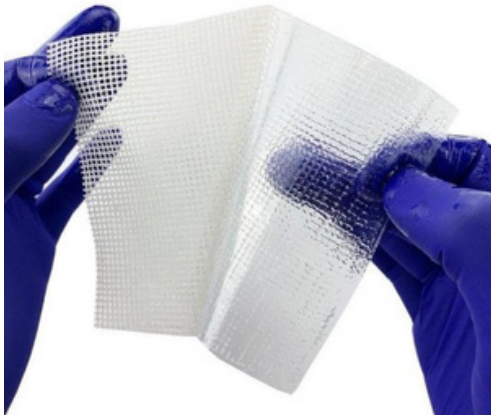
ROLLER BANDAGE

- Disposable and skin-friendly
- Uniformly knitted to prevent moisture
- Tested and long-lasting

ADHESIVE TAPE

- Used for fixation of dressing, tubing, osteomy pouches etc on patients
- Uniformly coated with hypoallergenic, non-toxic, non-irritant adhesive
- Made from micro-porous non-woven fabric
- Easy to peel off without causing discomfort or skin irritation
- High porosity allows skin to breathe
- High resistance to water and vapour



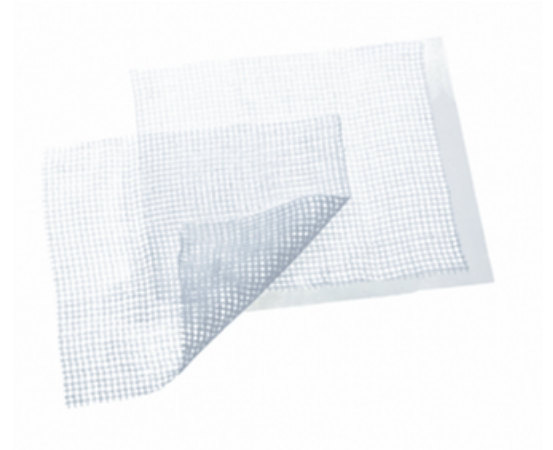


PARAFFIN GAUZE DRESSING

- Protects from bacteria
- Enhances recovery process
- Made from pure cotton
- Provides a primary wound contact layer

CHLORHEXIDINE GAUZE DRESSING

- Made from cotton or a synthetic material like polyester.
- Provide a protective barrier
- Prevent infection while the skin heals.



PLASTER OF PARIS BANDAGE

- Colour - White
- Material -Cotton
- Bandage Size - 15 cm X 2.7 m
- Strong, durable and lighter cast

ORTHOPEDIC BANDAGE

- Excellent padding for plaster cases
- Conforms to body contours
- Resistant to plaster penetration
- Used prior to the application prior to prosthesis and plaster cases



ABSORBENT GAUZE SWAB

- Lint Free
- Highly absorbent
- Made Up Of Woven Gauze Cloth

Porous Plast Surgical Tapes / Sports Tapes / Zinc Oxide Plaster Uniformly Extra Porous

- Used for dressing and general medical applications
- Made from cotton blended fabric
- Uniformly coated with hypoallergenic, non-toxic, non-irritant adhesive
- Easy to peel off without causing discomfort or skin irritation
- Thermo sensitive adhesive activates better when it comes in contact with warm human skin
- Manufactured as per British Pharmacopoeia (BP) United State Pharmacopoeia (USP) guidelines

